

MAINTENANCE MANUAL

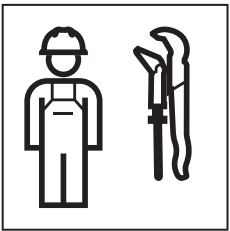


Table of contents

Safety	4
Target group	4
Intended use	4
Safety notes.....	4
Alert levels and symbols in this manual.....	4
Product description.....	5
Structure	5
Functional principle.....	5
Operation.....	7
Making settings using Geberit Service Handy.....	7
Troubleshooting	12
Deactivating automatic flush actuation	13
Maintenance	15
Replacing the control.....	15
Replacing the lifting device	17
Testing infrared user detection with manual flush actuation.....	21
Testing infrared user detection with automatic flush actuation.....	21
Care and cleaning	21

Safety

Target group

Maintenance and repair work on this product may only be performed by skilled persons. A skilled person is a person who, due to their specialist education, training and/or experience, is able to recognise risks and avoid hazards that may arise when using the product.


Intended use

The Geberit WC flush control with Sigma10 actuator plate is intended for flush actuation with Geberit Sigma concealed cisterns.

Safety notes

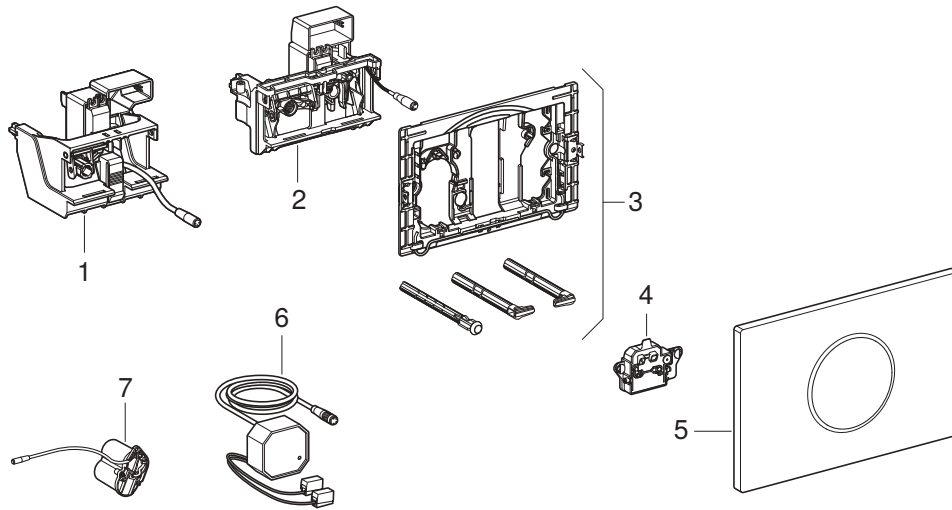
- Only use original spare parts when making repairs.
- Do not modify the product or add any additional modules.

Alert levels and symbols in this manual

Alert levels and symbols	
ATTENTION	Indicates a hazard which, if not avoided, can lead to material damage.
	Refers to important information.

Product description

Structure



- 1 Lifting device for Geberit Sigma concealed cistern 12 cm
- 2 Lifting device for Geberit Sigma concealed cistern 8 cm
- 3 Mounting frame
- 4 Control
- 5 Geberit actuator plate Sigma10
- 6 Power supply unit
- 7 Battery compartment

Functional principle

Several IR sensors are located behind the actuator plate of the WC flush control. These sensors scan different detection ranges.

The user detection range (1) measures whether a user is sitting or standing in front of the WC flush control. If a sitting user is detected, manual flush actuation is deactivated. This prevents a flush from being inadvertently released if the user leans back during use.

If the user's hand crosses the boundary of the manual flush detection range (2), the WC flush control releases a partial or full flush. If the user's hand is held briefly in the detection range, the WC flush control releases a full flush. If the user's hand is held for an extended time in the detection range, the WC flush control releases a partial flush.

The proximity detection range (3) is active only in battery operation and is used for the purpose of energy saving. The user detection range is activated as soon as there is a change in this area.

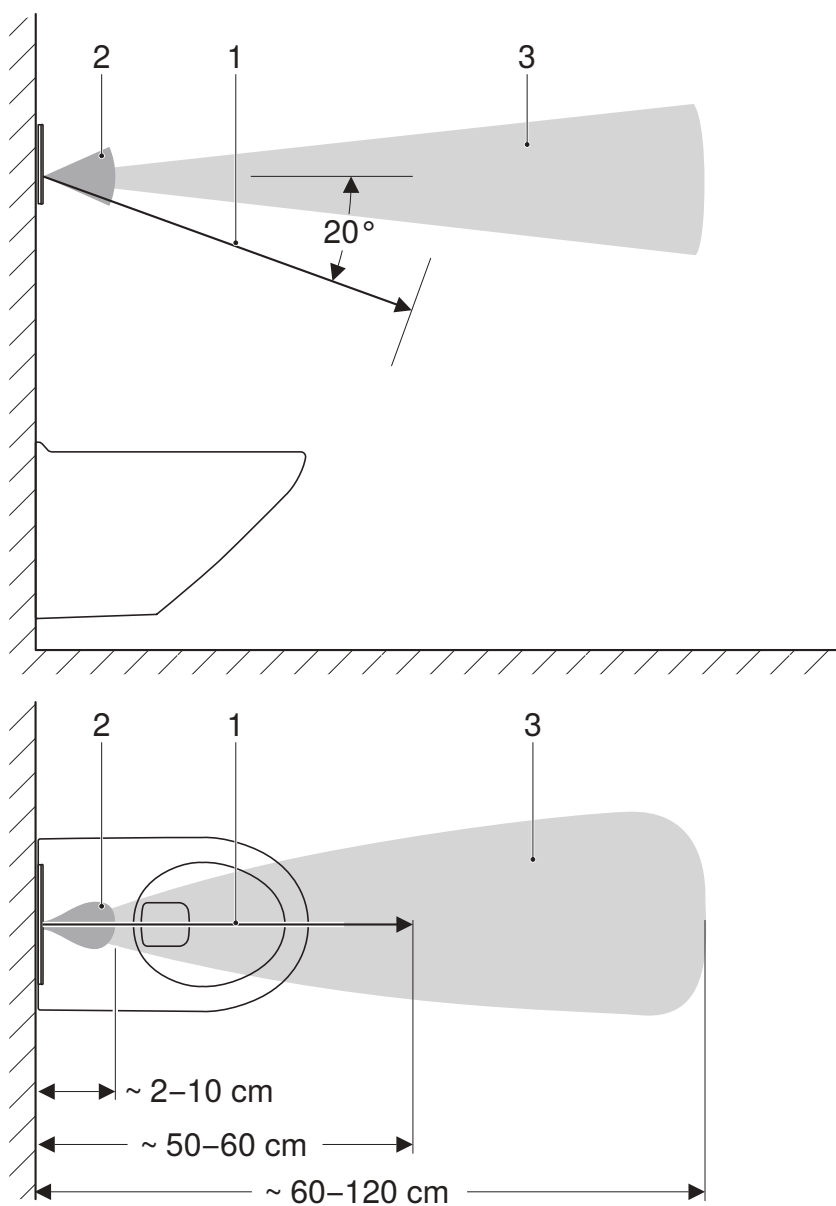


Figure 1: Detection ranges

- 1 User detection range
- 2 Manual flush detection range
- 3 Proximity detection range

Operation

Making settings using Geberit Service Handy

The infrared interface for communication with the Geberit Service Handy is located in the middle of the actuator plate. To enable settings to be made, the Geberit Service Handy must be aimed at the infrared interface for communication from a distance of 20 to 30 cm and set to bidirectional mode.

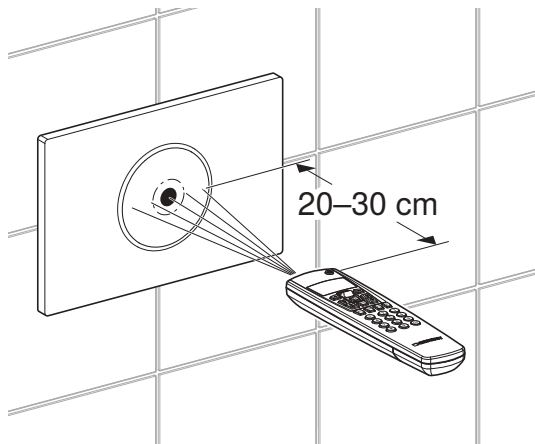


Figure 2: Operation using the Geberit Service Handy

With the Geberit Service Handy, additional maintenance functions can be performed and individual settings can be made. The numbers and terms in the column "Menu item" correspond to what can be seen on the display of the Geberit Service Handy. Further information can be found in the user manual of the Geberit Service Handy.

Commands				
Menu item [EN] [DE]	Description	Application	Value	Factory setting
20 [FullFlush] [VollMenge]	Release full flush volume. Triggers a full flush.	For function tests of the lifting device	Start = <OK>	–
21 [PartFlush] [TeilMenge]	Release partial flush volume. Releases a partial flush.	For function tests of the lifting device	Start = <OK>	–

Commands				
Menu item [EN] [DE]	Description	Application	Value	Factory setting
22 [RangeTest] [TestErfas]	Check detection range. The boundary of the detection range must be crossed in order to check its function. No flush is released in this process. The detection range is without malfunction if the LED in the sensor window lights up. The function is deactivated automatically after 10 minutes.	In the event of detection malfunctions	0–3 [...]	0 [0]
	0 Function is deactivated.			
	1 The sensor for the user detection range is activated. LED lights up= user has been detected.			
	2 The sensor for the manual flush detection range is activated. LED lights up= hand has been detected.			
	3 The sensor for the proximity detection range is activated. LED lights up = user movement in the detection range.			
23 [CleanMode] [Reinigung]	Activate cleaning function. The control is inactive for the duration of the entered value from menu item 42 [CleanTime] [ReiniZeit]. The function is cancelled by re-establishing connection with the Geberit Service Handy. The LED in the sensor window flashes in 3-second cycles.	Actuator plate and WC can be cleaned without releasing a flush.	Start = <OK>	–
24 [BlocFlush] [Blockiere]	Block flush. No flush is released. Function is cancelled upon re-establishing connection with the Geberit Service Handy. The function is deactivated automatically after 10 hours.	In the event of detection malfunctions	Start = <OK>	–
25 [FactrySet] [Werkeinst]	Reset all functions to factory settings.	In the event of malfunctions	Start = <OK> Confirm = <R>, <OK>	–

Programs				
Menu item [EN] [DE]	Description	Application	Value	Factory setting
30 [AutFlshEn] [AutFlshEn]	Enable automatic flush. If this function is activated, the control always releases a flush when the user steps back from the WC. Manual flush actuation is no longer necessary.	Hygiene	On = <ON> Off = <OFF>	[ON]
31 [ManFlshEn] [FreiManSp]	Activate manual flush.	–	On = <ON> Off = <OFF>	[ON]
32 [PowOnFlsh] [NetzEinSp]	Select power-on flush. If the mains voltage is on, a flush is released by the control.	<ul style="list-style-type: none"> • Releasing the central flush • Function confirmation 	On = <ON> Off = <OFF>	[OFF]
33 [PreFlush] [Vorspülng]	Select pre-flush. The control releases a partial flush when a user steps into the user detection range.	Wets the WC ceramic appliance before use to reduce deposits.	On = <ON> Off = <OFF>	[OFF]

Parameters				
Menu item [EN] [DE]	Description	Application	Value	Factory setting
40 [FlshTime] [Spülzeit]	Set flush time. The flush volume of the partial flush can be set. (The specified flush volumes are reference values and depend on the WC ceramic appliance).	Optimum flushing of the WC ceramic appliance	0–4 [...] 0 = 2.5 l 2 = 3.5 l 4 = 4.5 l	3.5 l [2]
41 [IntervalT] [IntervalZ]	Set flush interval for sanitary flush. The control automatically performs a flush at the interval dictated by the entered value for the flush time from menu item 46 [HygFlshT]. The interval is restarted with every flush.	<ul style="list-style-type: none"> Filling the trap for low usage frequency Flushing out stagnant water (to prevent stagnation) 	1–168 h [...] 0 = Off	24 h [24]
42 [CleanTime] [ReiniZeit]	Set cleaning time. Defines the duration of the inactivity of the control when menu item 23 [CleanMode] [Reinigung] is started.	–	1–30 min [...]	10 min [10]
43 [DetectRng] [ErfassDis]	Specify size of WC ceramic appliance. The size of the WC ceramic appliance is relevant for detection of seated user.	–	0–1 [...] 0 = short 1 = long	1 [1]
44 [DetectT] [VerweilZ]	Set detection time. Minimum detection time a person must remain within the user detection range in order to be recognised as a standing or seated user. Only relevant if automatic flush actuation is switched on.	Prevents flushes due to unintentional entry of a person into the user detection range	1–60 s [...]	7 s [7]
45 [DelayTime] [Spülverzö]	Set flush delay. After the user has left the user detection range, the set time interval elapses before a flush is released. Only relevant if automatic flush actuation is switched on.	–	1–15 s [...]	3 s [3]
46 [HygFlshT] [HygFlshT]	Set flush time for sanitary flush. The control automatically performs a flush at the interval dictated by the entered value from menu item 41 [IntervalT] for the duration of the entered value.	<ul style="list-style-type: none"> Filling the trap for low usage frequency Flushing out stagnant water (to prevent stagnation) 	1–200 s [...]	1 s [1]

Counters		
Menu item [EN] [DE]	Description	Output
50 [Days?] [SumBetrT?]	Total number of days of operation. Displays the number of days of operation since commissioning.	[...] days
51 [Uses?] [SumBenut?]	Total number of uses. Displays the number of uses since commissioning.	[...] uses
52 [Flushes?] [SumSpül?]	Total number of flushes. Displays the number of flushes since commissioning.	[...] flushes
53 [AutFlush?] [SumAutSp?]	Total number of automatic flushes. Displays the number of automatic flushes since commissioning.	[...] flushes
54 [ManFlush?] [SumManSp?]	Total number of manual flushes. Displays the number of manual flushes since commissioning.	[...] flushes
55 [FullFish?] [SumVollM?]	Total number of manual full flushes. Displays the number of full flushes since commissioning.	[...] flushes
56 [PartFish?] [SumTeilM?]	Total number of manual partial flushes. Displays the number of partial flushes since commissioning.	[...] flushes
57 [IntFlush?] [SumIntSp?]	Total number of interval flushes. Displays the number of interval flushes since commissioning.	[...] flushes
58 [PreFlush?] [SumVorSp?]	Total number of pre-flushes. Displays the number of preflushes since commissioning.	[...] flushes

Device information		
Menu item [EN] [DE]	Description	Output
60 [SWVersion] [SWVersion]	Software version. Shows the software version of the control in the format "DWWYY" (D=day of the week, W=calendar week, Y=year), e.g. [41113].	[...]
61 [SerialNo] [Serien-Nr]	Serial number. Indicates the serial number of the control.	[...]
62 [ManufDate] [ProdDatum]	Manufacturing date of the control. Indicates the manufacturing date of the control (e.g. [15122012] = 15 December 2012).	[...]

Troubleshooting

The operator can perform the following measures to rectify malfunctions:

- clean the actuator plate
- replace the batteries

These measures are described in the operation manual 966.230.00.0.

Malfunction	Cause	Rectification
Incorrect flushes (too soon, too late, unwanted)	Sensor window dirty or wet	► Clean or dry the actuator plate. → See operation manual 966.230.00.0.
	Sensor window scratched	► Replace the actuator plate.
A flush is released without manual actuation when the user steps back from the WC.	Automatic flush actuation active	► Deactivate automatic flush actuation.
Water is running continuously into the WC ceramic appliance.	Software fault	► Interrupt the power supply (mains fuse) for 10 seconds.
	Flat gasket for the flush valve defective	► Replace the flat gasket for the flush valve.
	Fill valve defective	► Replace the fill valve.
The WC ceramic appliance is not being flushed out properly.	Flush volumes set incorrectly	► Set the correct full flush volume on the flush valve. ► Set the correct partial flush volume with the Geberit Service Handy.
Flush cannot be released.	Network failure	► Check the power supply (mains fuse).
Flush cannot be released. The LED in the sensor window flashes when a user is in the user detection range.	Battery capacity low	► Change the batteries. → See operation manual 966.230.00.0.
Flush cannot be released. The LED in the sensor window lights up when a user is in the user detection range.	Batteries flat	► Change the batteries. → See operation manual 966.230.00.0.
Flush cannot be released. The LED in the sensor window flashes quickly.	Plug of the lifting device not plugged in correctly	► Correctly plug the plug into the lifting device.
	Lifting device defective	► Replace the lifting device.

Deactivating automatic flush actuation

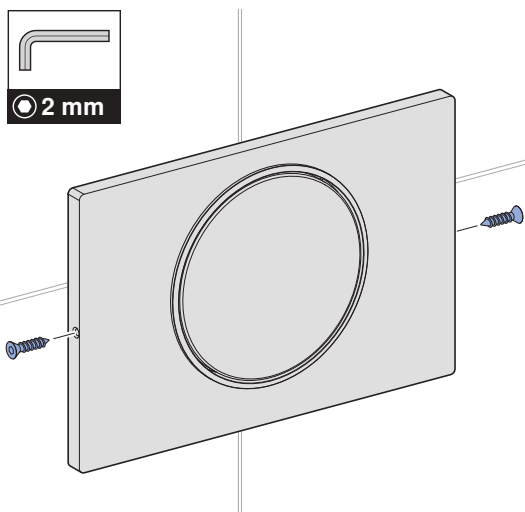
The preset automatic flush actuation can be deactivated at any time.

- i** The procedure for activating automatic flush actuation is the same as for deactivating it. 5 single tones will sound to indicate that automatic flush actuation has been activated successfully.

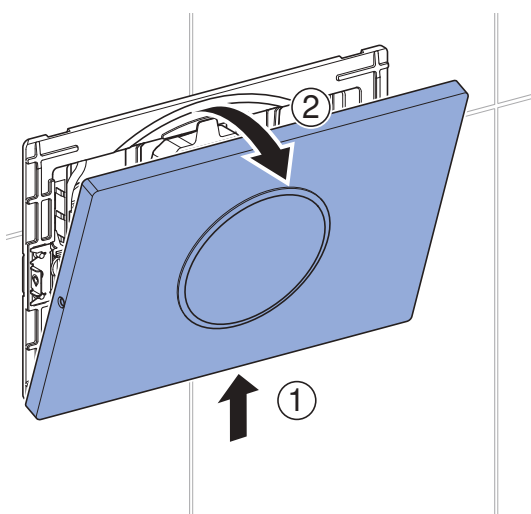
Prerequisite

- The WC flush control is ready for operation.

- i** Loosen any screws that may be present on both sides of the actuator plate.

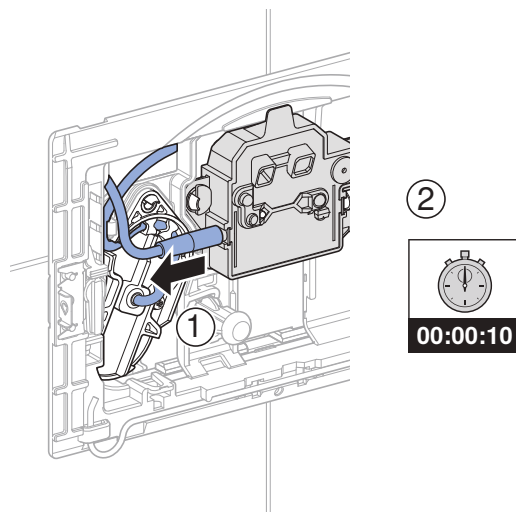


- 1** Remove the actuator plate.

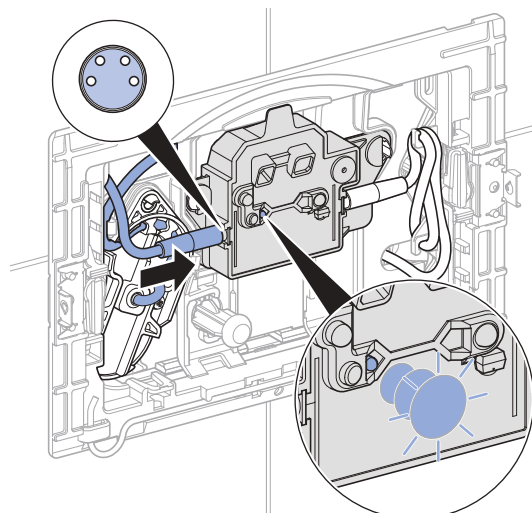


- i** To ensure that the conversion is successful, the following steps must be performed within 15 minutes:

- 2** Disconnect the power supply cable from the control for 10 seconds.

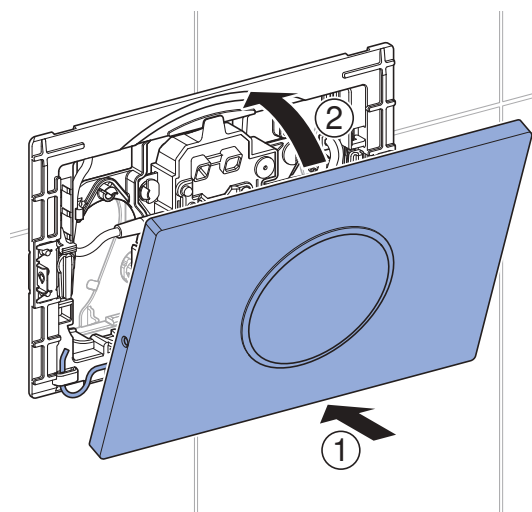


- 3** Reconnect the mains cable to the control.

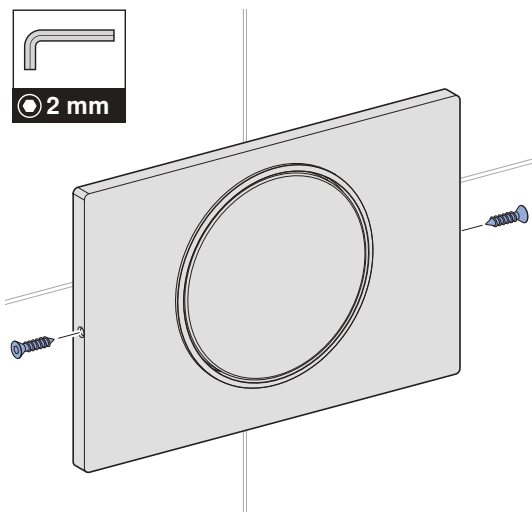


- ✓ Indicator light lights up.
- ✓ After 15 seconds, 5 triple tones sound to indicate that deactivation is complete.

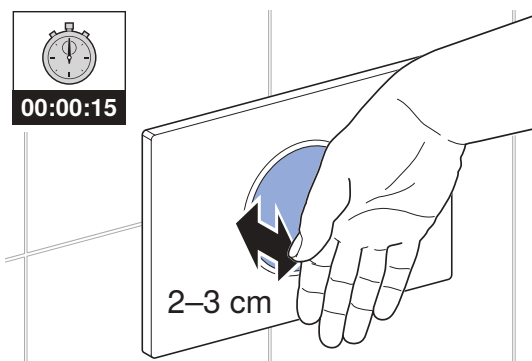
- 4** Mount the actuator plate.



-
- i** If necessary, screw in the screws on both sides of the actuator plate.



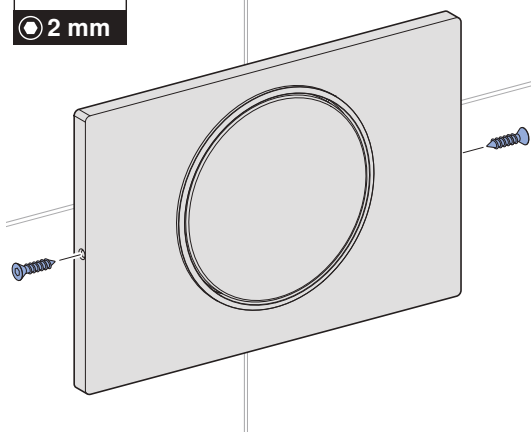
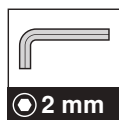
-
- 5** To test that automatic flush actuation has been deactivated, place your hand at a distance of 2–3 cm from the actuator plate.



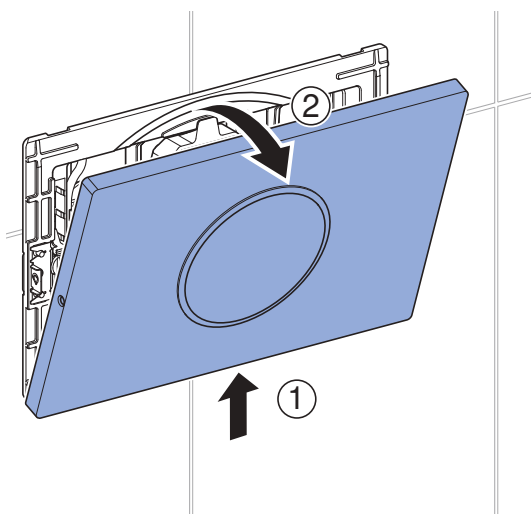
Maintenance

Replacing the control

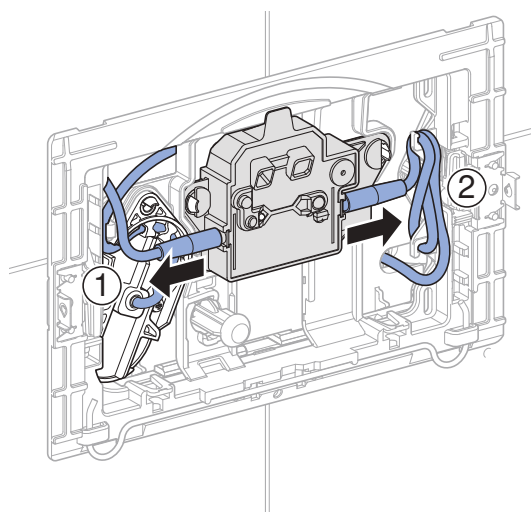
- i** Loosen any screws that may be present on both sides of the actuator plate.



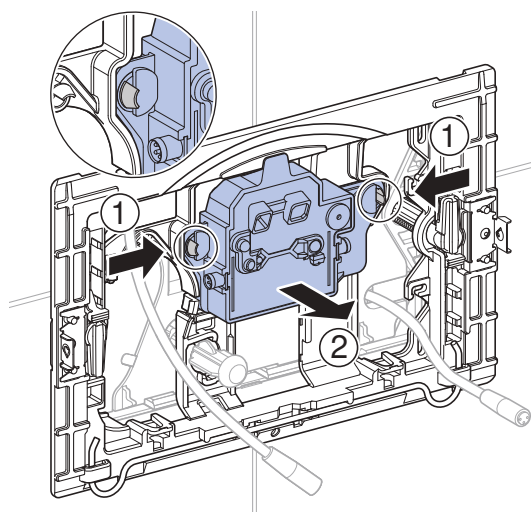
- 1** Remove the actuator plate.



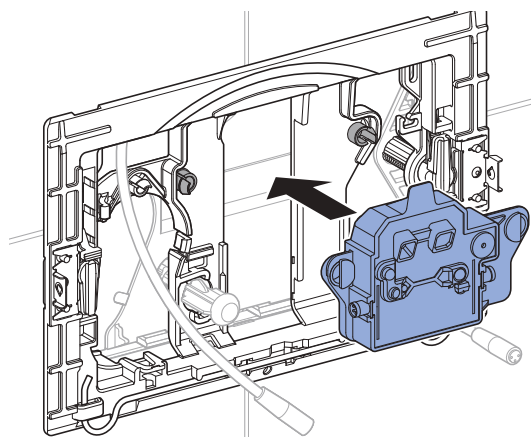
- 2** Disconnect both cables from the control.



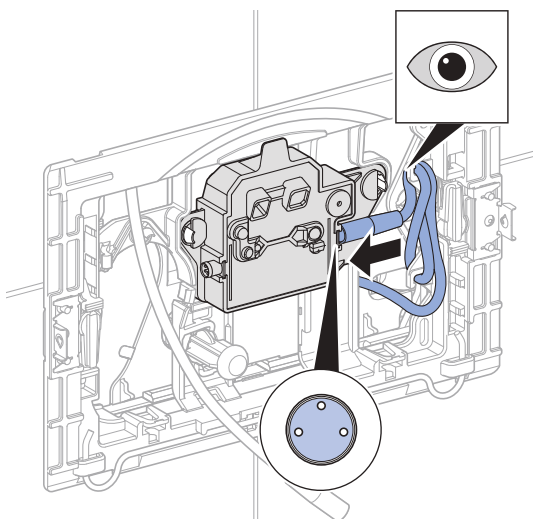
- 3** Extract the control.



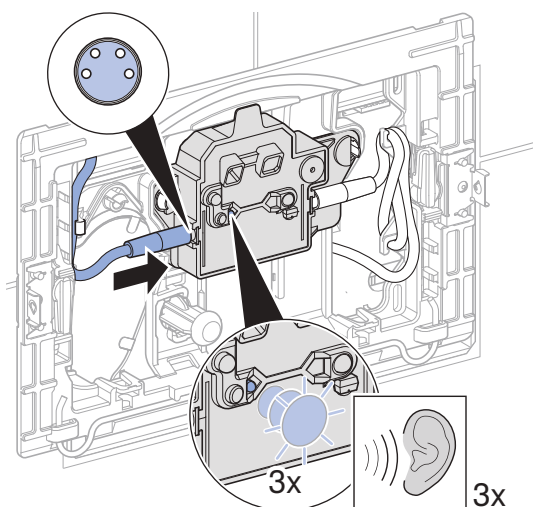
- 4** Insert the new control.



- 5** Reconnect the cable on the right-hand side to the control and hook the excess cable into the cable suspension.

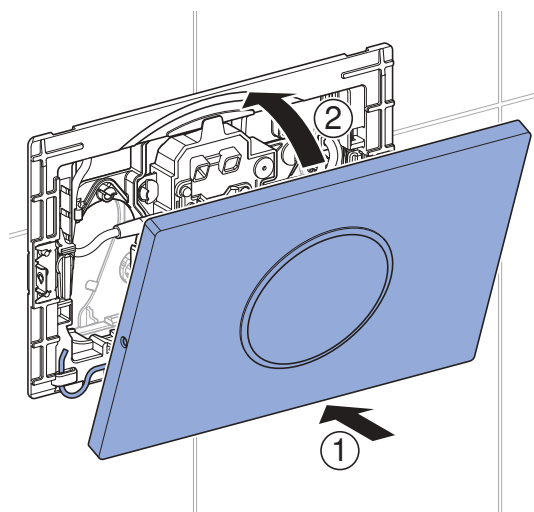


- 6** Reconnect the power supply cable on the left-hand side to the control.

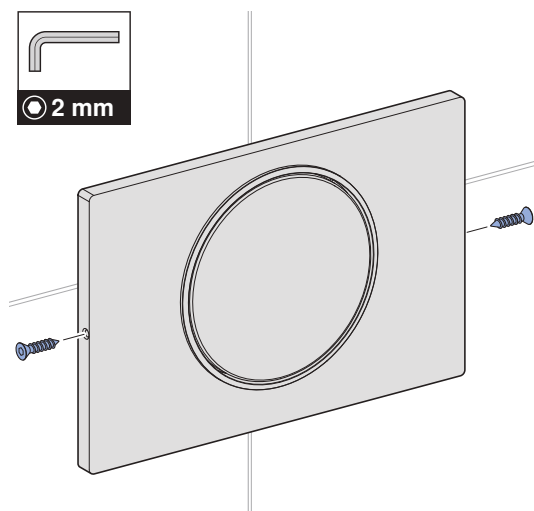


- ✓ The indicator light flashes and a signal tone sounds 3 times.

- 7** Mount the actuator plate.

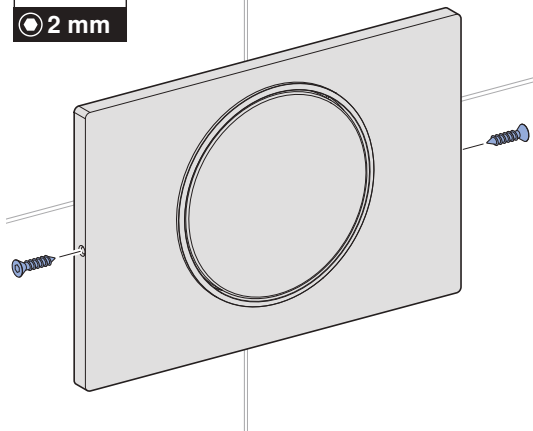
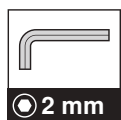


- i** If necessary, screw in the screws on both sides of the actuator plate.

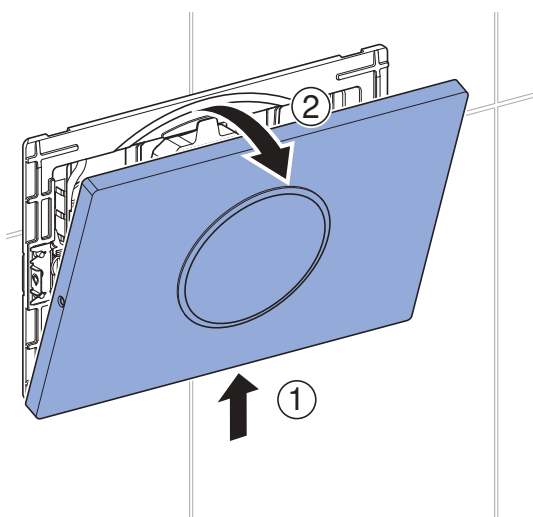


Replacing the lifting device

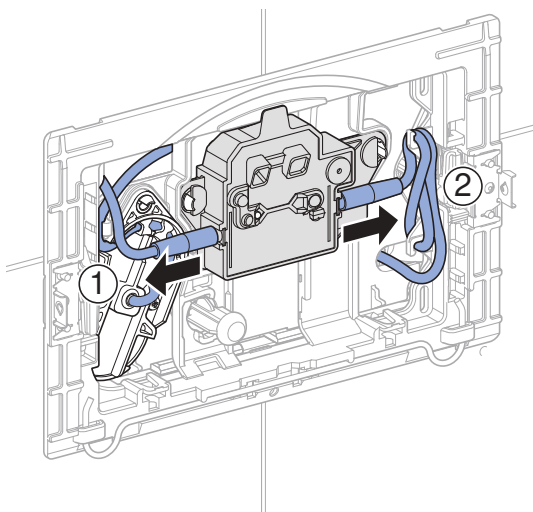
- i** Loosen any screws that may be present on both sides of the actuator plate.



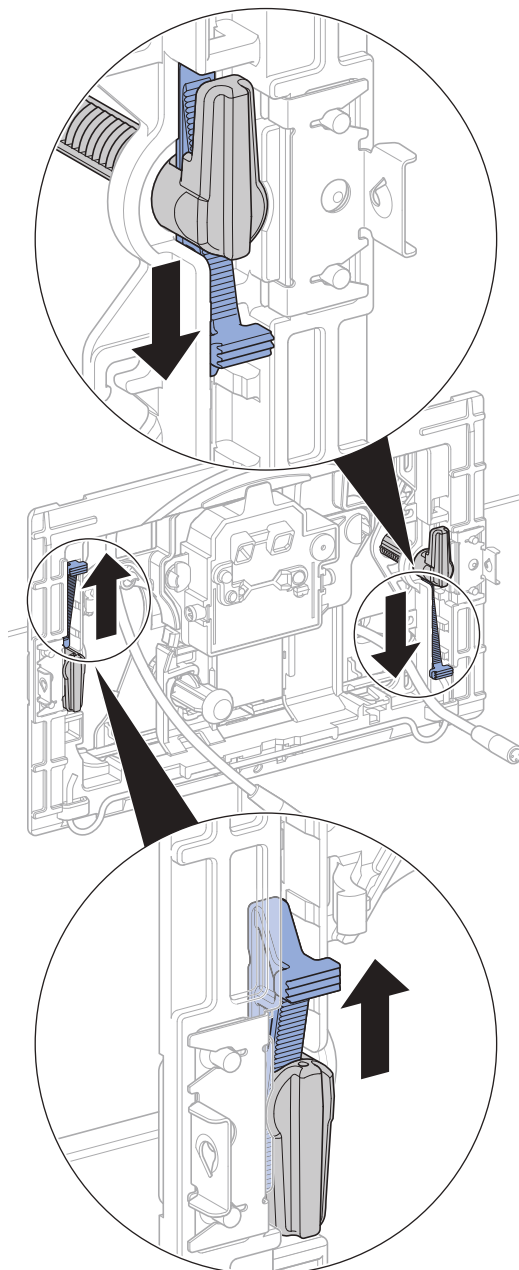
- 1** Remove the actuator plate.



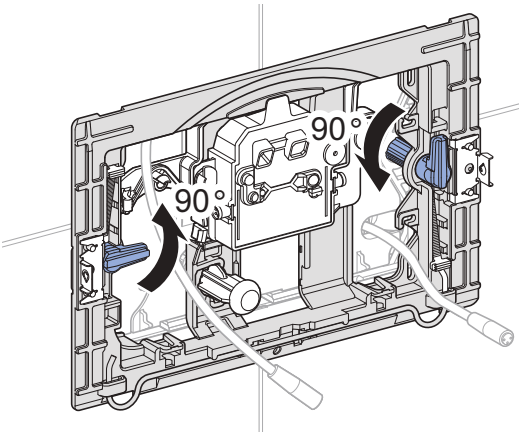
- 2** Disconnect both cables from the control.



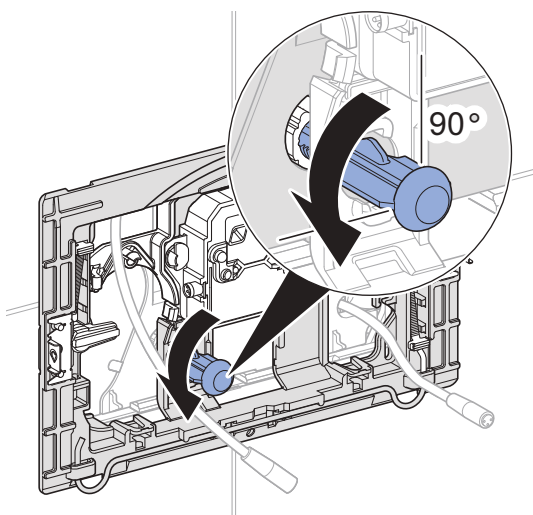
- 3** Remove the tension wedge.



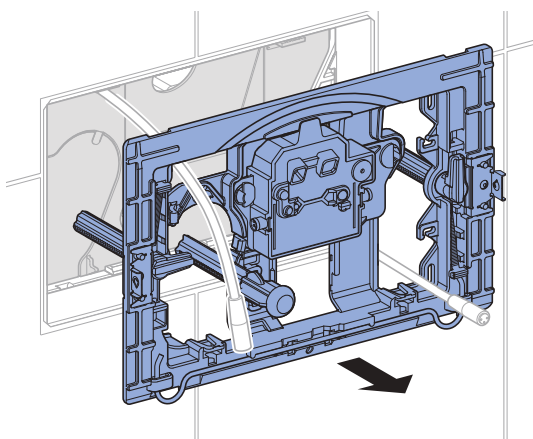
- 4** Turn the distance bolts.



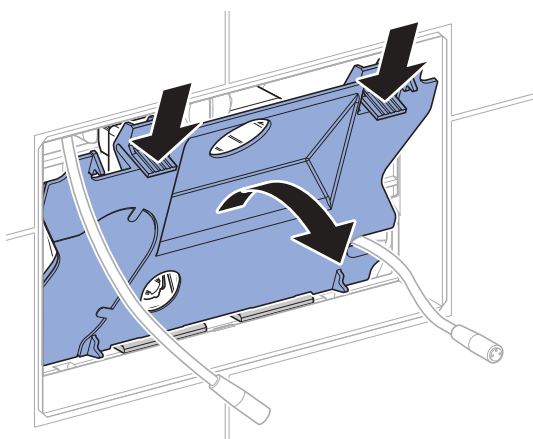
- 5** Turn the actuator rod anticlockwise.



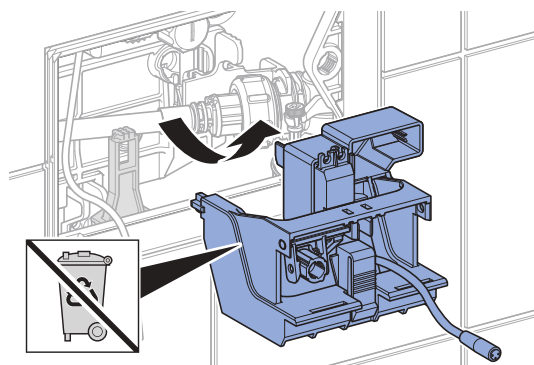
- 6** Extract the mounting frame.



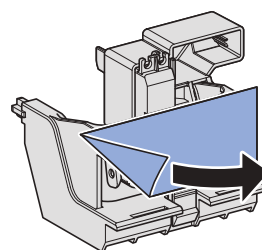
- 7** Extract the protection plate.



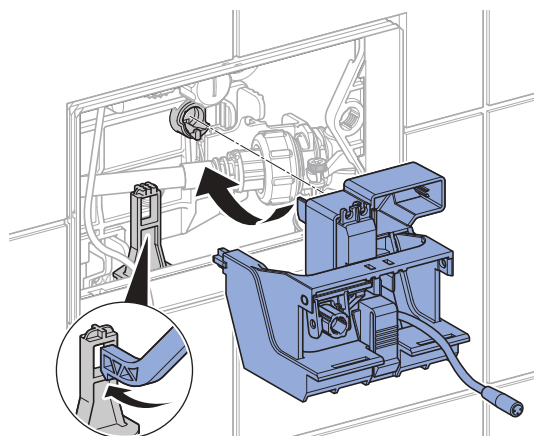
- 8** Extract the lifting device.



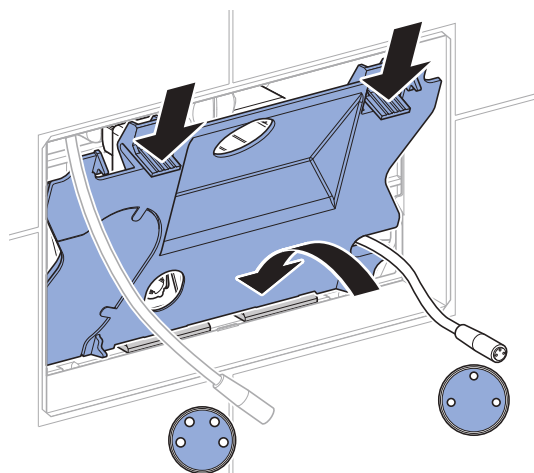
- 9** Remove the protective foil from the new lifting device.



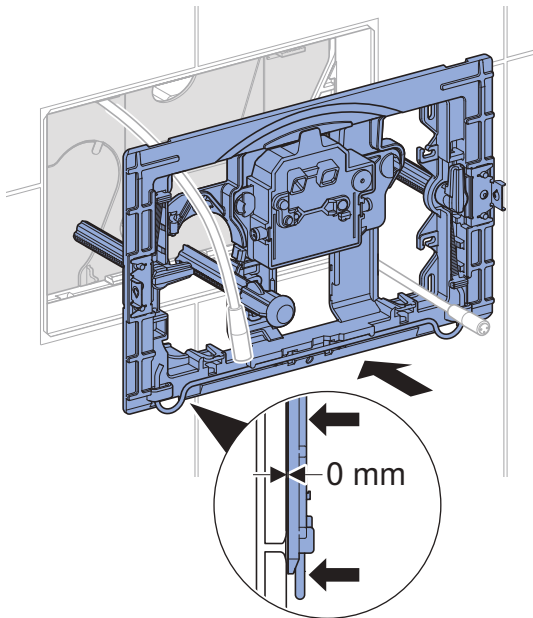
- 10** Mount the new lifting device.



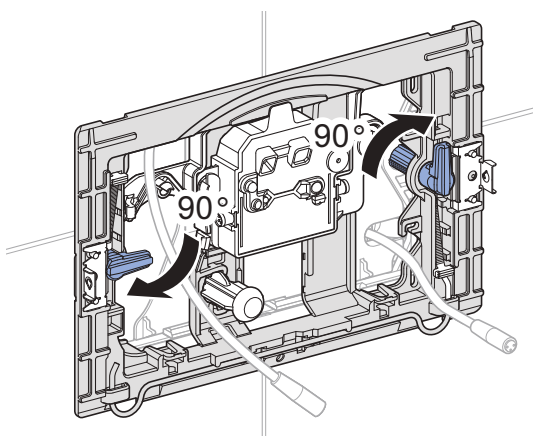
- 11** Mount the protection plate.



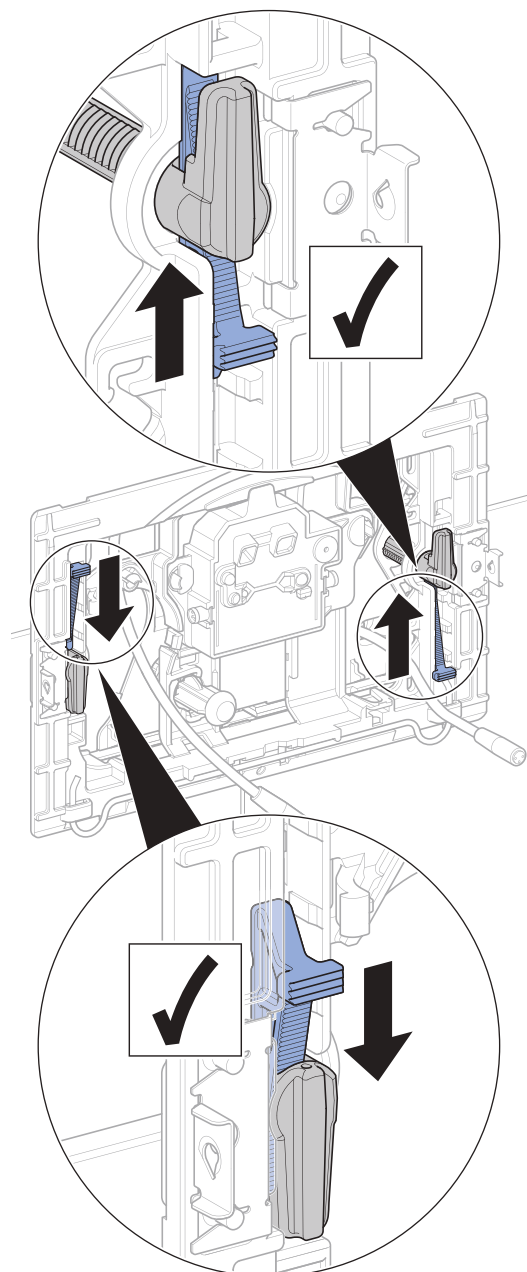
12 Mount the mounting frame.



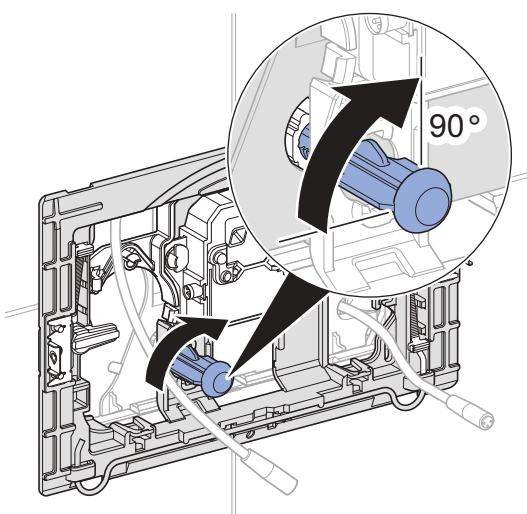
13 Secure the distance bolts in place.



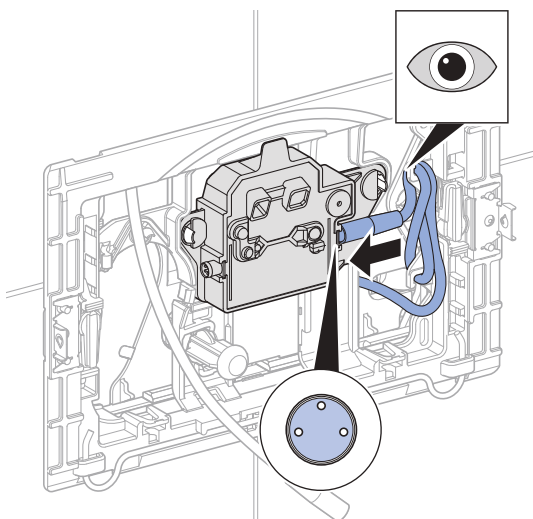
14 Secure the tension wedge in place.



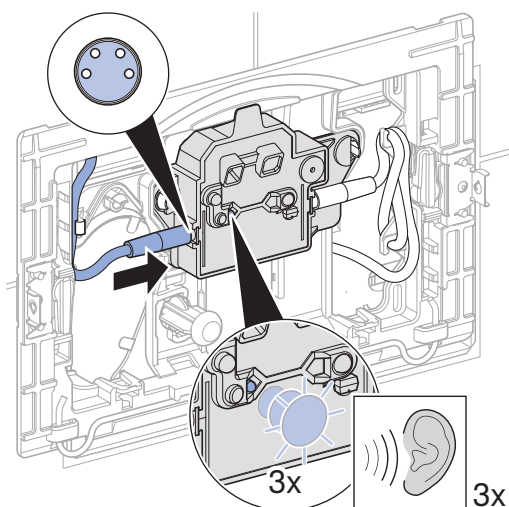
15 Turn the actuator rod clockwise.



- 16** Reconnect the cable on the right-hand side to the control and hook the excess cable into the cable suspension.

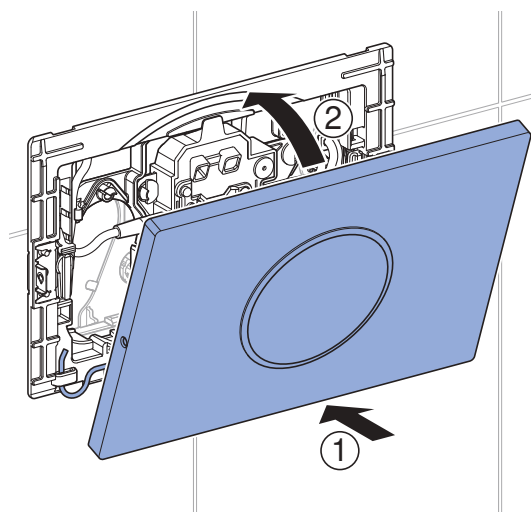


- 17** Reconnect the power supply cable on the right-hand side to the control.

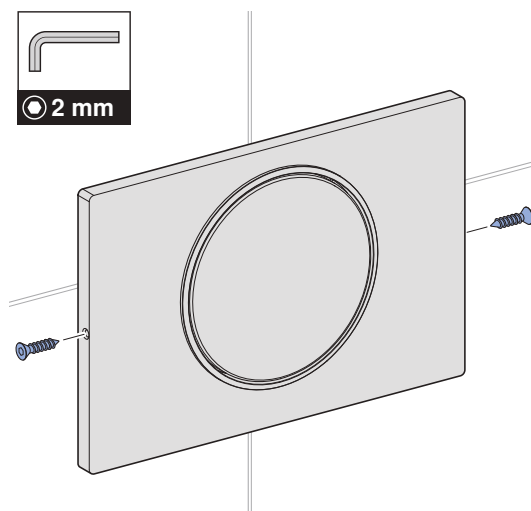


- ✓ The indicator light flashes and a signal tone sounds 3 times.

- 18** Mount the actuator plate.

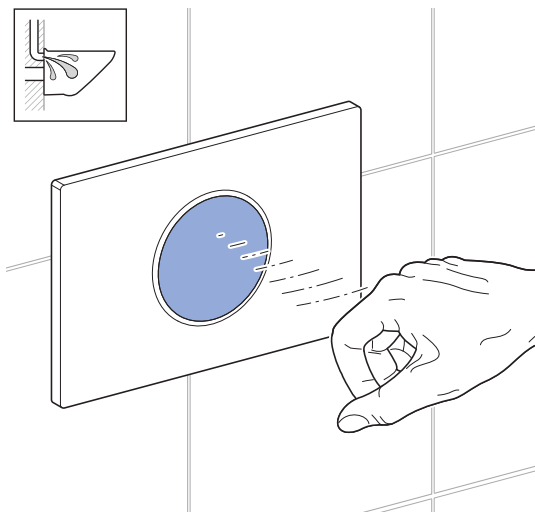


- i** If necessary, screw in the screws on both sides of the actuator plate.



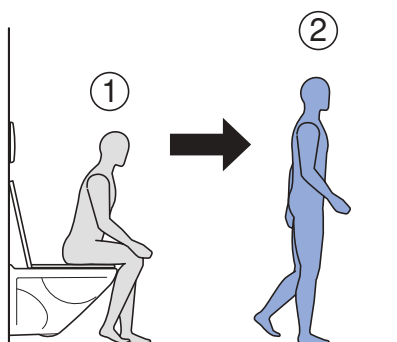
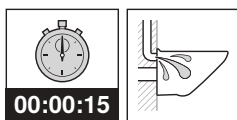
Testing infrared user detection with manual flush actuation

- Place your hand in front of the actuator plate.



Testing infrared user detection with automatic flush actuation

- Leave the user detection range.



Care and cleaning

ATTENTION

Surface damage caused by aggressive and scouring cleaning agents

- Never use cleaning agents that contain chlorine or which are acidic, abrasive or corrosive.

i Geberit recommends the Geberit AquaClean cleaning set (art. no. 242.547.00.1).

- 1** Clean the surfaces with a soft cloth and a mild liquid cleaning agent.
- 2** Dry the surfaces with a soft cloth.

Geberit International AG
Schachenstrasse 77, CH-8645 Jona
documentation@geberit.com
www.geberit.com

